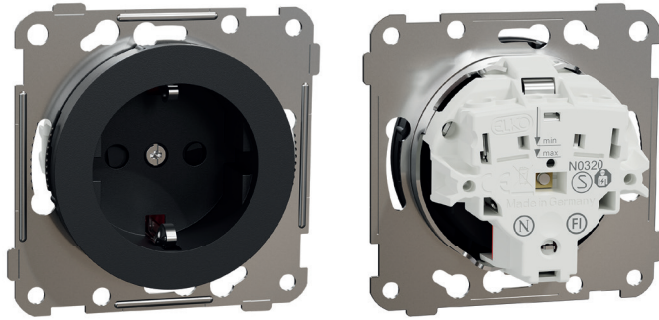


Data Sheet EKO50130

Product:	Single SO Schuko screwless
E-number NO:	15 510 39
E-number SV:	18 401 14
E-number FI:	25 043 12
EAN:	7020161501300
Packing:	10
Color:	Black



Product description:

It's a ELKO One single Schuko socket-outlet with center plate. It is provided with screwless terminals with the wire entrance on the side. Its Ue rated operational voltage is 250VAC at 50/60 Hz. Its Ie rated operational current is 16A. Claw-kit EKO04848 can be used for additional fixation to the flush wall-box when needed. To be mounted in suitable 1 to 5-gang cover frame for flush cc 60mm wall-box installation or 1 to 3-gang high surface mounted box for surface installation, as well as in corner box. The dimensions of the product are (W) 71mm x (H) 71mm x (D) 42mm. It is made of recycled Polycarbonate (PC). The color of the product is black (RAL 9005) with matt surface finish. It reaches IP21 degrees of protection with IK06 impact strength.



One range by ELKO is covering Wiring Devices, Stand Alone Electronics and Network Connectivity functions for both flush as well as surface installation. The One Range has been developed with sustainability in mind, using recycled plastic, recycled packaging material and Cradle to Cradle certified. Modern and slim design with a smooth matt surface finish that is reflecting the light in a glowing way due to it's shape.

Dimensions

