

SHT-X3 Shunt release

1. Major function

To be assembled with the circuit breaker to achieve remote shunt trip.

2. Parameters and performance

Rated insulation voltage (Ui): 500V;

Rated operation current under different rated operation voltage (see Table 1):

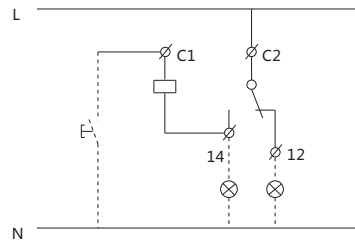
Utilization category: AC-12, DC-12.

Table 1

Rated operating voltage (V)	Rated operating current (A)
AC 415	3
AC 240	6
AC/DC 48	3
AC/DC 24	6

Action characteristics: within the range of 70% ~ 110% of the rated control supply voltage, the release should operate reliably to open the circuit breaker. Figure 1 shows the wiring diagram for the release. When the release is open, terminal C2 and 12 shall be connected, and the external security indicator shall light up; when the release is closed, terminal C2 and 14 shall be connected, and the external warning indicator shall light up; when the release is closed, and the external button is connected, the release shall trip and drive the circuit breaker to trip and be opened. Meanwhile, the release indicator shall display trip mark. Mechanical life: operating life of the release is ≥ 4000 cycles.

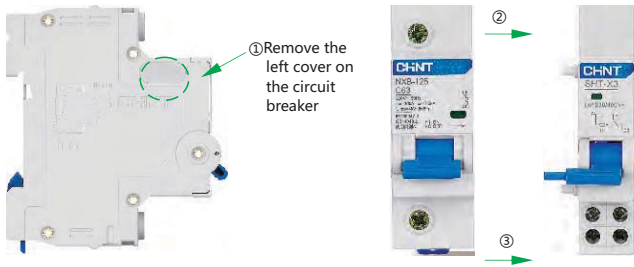
Figure 1



3. Assembly and installation of the product

SHT-X3 can be assembled with NXB-125 circuit breaker, with the assembly diagram shown below:

Figure 2



After the release is assembled with the circuit breaker, mount them on TH35-7.5 steel mounting rail.

4. Dimensions and installation sizes

Figure 3

