

# ECOLOGY

## IP65 DISTRIBUTION BOXES

Description: IP65 SURFACE BOX 2x18 (36) MOD. (TW). ABS. N&E BARS

Reference:  
**CDN36PT2F/RR**

### Characteristics:

|  |   |
|--|---|
| <b>Product type:</b>                                 | ABS watertight distribution boxes with neutral and earth bars (Sealable)  |
| <b>Exterior dimensions (Height x Width x Depth):</b> | 436x418x148 mm  |
| <b>Dimensions of the flush-fit gap (HxWxD):</b>      | -   |
| <b>Number of modules:</b>                            | 2x18 (36) DIN rail  |
| <b>Installation:</b>                                 | Surface   |
| <b>Color:</b>  | Grey RAL 7035   |
| <b>Window:</b>                                       | Transparent tinted window. UV protection polycarbonate  |
| <b>Weight (Kg):</b>                                  | 3,18  |
| <b>Cable entry:</b>                                  | Top: 12xM20 - 6xM25 - 2xM32 - 1xM40. Bottom: 12xM20 - 6xM25 - 2xM32 - 1xM40. Int.: 4xM25. Oblong rear: 2xOB 25/32/25                      |
| <b>Components:</b>                                   | N&E Cable section: 12x(2,5-6 mm <sup>2</sup> )+12x(4-10 mm <sup>2</sup> )+1x(10-25 mm <sup>2</sup> )+1x(16-35 mm <sup>2</sup> )           |
| <b>Materials:</b>                                    | Halogen-free plastic materials. Frame and base: ABS. Recommended for outdoor use: UV protection under ISO standard 4892-2, Method A: 500h |

### Technical data:

|                                   |                       |
|-----------------------------------|-----------------------|
| <b>Degree of protection:</b>      | IP65                  |
| <b>Resistance to impact:</b>      | IK08                  |
| <b>Glow wire resistance:</b>      | 650 °C                |
| <b>Ball pressure test:</b>        | 70 °C                 |
| <b>Ambient temperature range:</b> | -25 °C / +40 °C       |
| <b>Maximum operating voltage:</b> | 1000 V AC / 1500 V DC |
| <b>Double insulation:</b>         | Class II              |

### Certificates and standards:

|                      |                            |
|----------------------|----------------------------|
| <b>Directive:</b>    | 2014/35/EU                 |
| <b>Standards:</b>    | UNE-EN 62208 and IEC 62208 |
| <b>Certificates:</b> |                            |



### Codes:

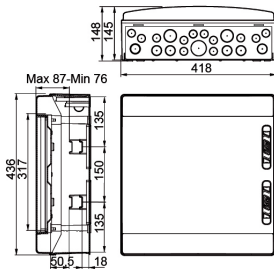
|                               |               |
|-------------------------------|---------------|
| <b>EAN:</b>                   | 8431044130071 |
| <b>Customs tariff number:</b> | 85.38.10.00   |
| <b>ETIM 6.0:</b>              | EC001892      |

# ECOLOGY


## IP65 DISTRIBUTION BOXES

Description: IP65 SURFACE BOX 2x18 (36) MOD. (TW). ABS. N&E BARS

Reference: CDN36PT2F/RR



### Detailed drawing:

 <http://www.ide.es/downloads/planos/pdf/CDN36PT2FRR.pdf>

 <http://www.ide.es/downloads/planos/dxf/CDN36PT2FRR.dxf>

**Exterior dimensions (Height x Width x Depth):**

436x418x148 mm

**Dimensions of the flush-fit gap (Height x Width x Depth):**

-

### Sustainability:

RoHS - REACH

### Supply:

Supplied in individual cardboard packaging. When several items are sent together, they are bundled together with transparent film.

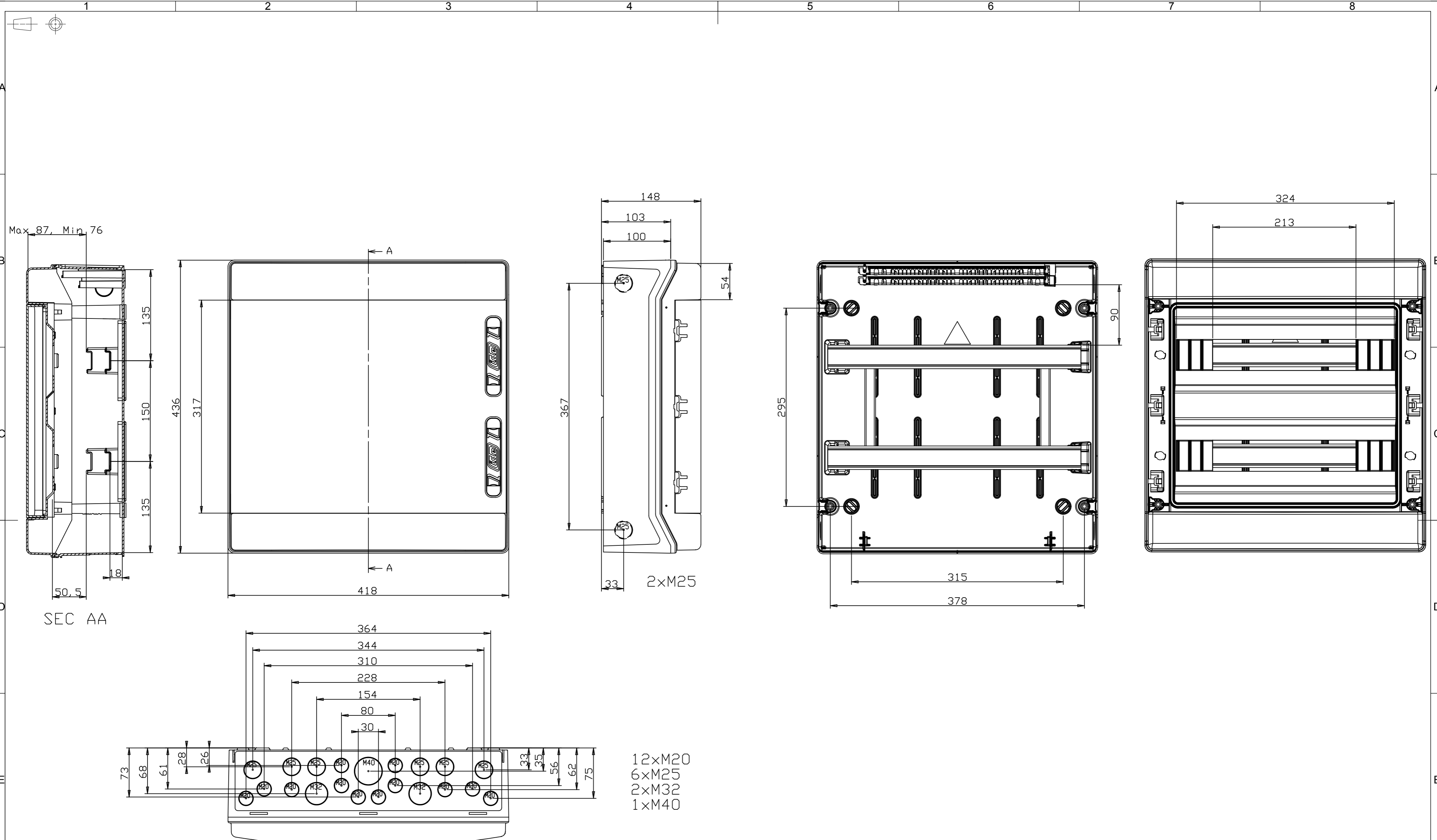
**Packaging units:** 2

### Product end of life:

It does not require specific recycling operations.

### Recommended applications:

Industrial and outdoor environments. Industrial sites, docks, swimming pools, garages, anywhere that requires a high degree of protection against dust, splashes and impacts.



Queda terminantemente prohibida la reproducción o divulgación, total o parcial, de este plano sin previa autorización por escrito de I División Eléctrica S.A.  
 Total or partial reproduction or disclosure of this document is strictly forbidden without the prior written approval of I División Eléctrica S.A.

|                                |                |               |  |   |                        |
|--------------------------------|----------------|---------------|--|---|------------------------|
| MODIFICADO<br>MODIFIED         |                |               |  |   |                        |
| FRMA / SIGNATURE<br>DIGITAL    | NOMBRE<br>NAME | FECHA<br>DATE | Nº EDIC.<br>MODIF.                         | DESCRIPCION DEL CAMBIO / CHANGE DESCRIPTION |                        |
| APROBADO<br>CHECKED            | C.VICENTE      | 15/06/2016    |  | DESCRIPCION / DESCRIPTION                   |                        |
| DIBUJADO<br>DRAWN              | J.P.VERA       | 15/06/2016    |  | CDN36PT2F/RR                                | CDP36PT2F/RR           |
| HOJA 1 DE 1 / SHEET 1 OF 1     |                |               | TOLERANCIAS GENERALES / GENERAL TOLERANCES |   |                        |
| TAMANO / ESCALA / SIZE / SCALE |                |               | CODIGO DE PLANO / DRAWING CODE             |   |                        |
| A2 1:1                         |                |               | EN 22768-mK 100.06.016                     |   |                        |
|                                |                |               |  |   | EDICION / EDITION Nº 1 |

